

828mk2 manual pdf



File Name: 828mk2 manual pdf.pdf

Size: 3514 KB

Type: PDF, ePub, eBook

Category: Book

Uploaded: 14 May 2019, 14:44 PM

Rating: 4.6/5 from 757 votes.

Download Now!

Please check the box below to proceed.



I'm not a robot



reCAPTCHA
Privacy - Terms

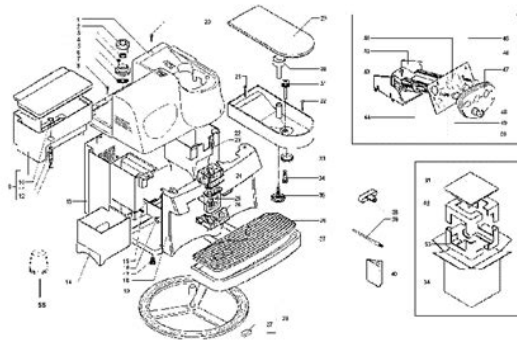
Book Descriptions:

828mk2 manual pdf



As before, MOTU's Mac-only Audiodesk multitrack recording software is bundled with the interface, and offers a multitrack recording and processing environment not dissimilar to the audio side of Digital Performer. Perhaps most important is the addition of control surface support for devices such as Mackie Control, though Talkback and Listenback have been also added, which is welcome news for anyone operating a separate control room and studio. The best news is that despite the many improvements, the price is now 100 lower than the old 828. Insert send jacks for these two channels are fitted to the rear panel, and any free outs or ins can be used as aux sends and returns. Goldplated connector contacts are used throughout and the converters are 24bit, 64x oversampling with 96kHz capability. Usefully, the word clock circuitry can also follow and generate high and low sample rates so that, for example, you could be running at 44.1kHz but still lock to a doublespeed 88.2kHz clock, or vice versa as selected in the MOTU Firewire Audio Console. The other welcome addition is a second Firewire socket, which makes life easier when you need to chain peripherals. As with the original 828, there's a rearpanel footswitch jack that can be used to punch in and out in Audiodesk and other compatible audio applications this can be set to emulate any keyboard keystroke, a headphone output that can follow any output pair, a master level control that governs the headphone and main out level and Cuemix zero-latency monitoring. Having a physical output level control is particularly useful for anyone using active monitors without a mixer, as this provides them with a means to adjust their monitoring level. The main outputs themselves are equipped with 128x oversampling converters and may be used to provide a main stereo output feed, or they can carry the zero-latency cue mix. <http://www.newgo.ru/media/emerson-ewl20s5c-manual.xml>

- **motu 828 mk2 manual pdf, 1.0, motu 828 mk2 manual pdf.**



Pos.	ART-NR.	Bezeichnung	Pos.	ART-NR.	Bezeichnung
1	842501633	Gehäuseschließung silbermet. hoch V81	28	136515001	Linien-Blechschr. 2,6x13 DIN 7981, INOX
	842502292	Gehäuseschließung silbermet. La Cucina	29	136517103	Linien-Blechschr. 5,8x8 DIN 7981, vernick.
	222620143	Gehäuseschließung dunkelblau	29	842900398	Bohnenbehälter f. Dosiermehl
2	142844059	Vertikalkappe_grau	142713651	Bohnenbehälter f. Dosiermenge	
3	841555131	Uppenschaltung 12ACCO DIN 141	23	136517203	Linien-Blechschr. 3,6x5,5 DIN 7981, verzinkt
4	126815921	Stink-Blechschr. 3,5x5,5 DIN 7982, INOX	24	842901638	Kaffeewalkauförderer schwarzmet.
5	842500488	Wassertankdeckel, schwarzmetall	25	842901830	Kaffeewalkauförderer schwarzmet.
6	842502208	Wassertankdeckel dunkelblau	26	842901840	Kaffeewalkauförderer schwarzmet.
7	143181526	Vertikalmet. grau	27	842900198	Full für Drehbohrer 6x15x2,2mm
8	842500498	Dichtungsschleife zu Ventil	28	842900038	Drehbohrer mit Führung grau
9	842500487	Torn-Schraube 2,6x19, INOX	26	842900468	Bohnenbehälterdeckel schwarzmet.
9	842500952	Wassertank lgt. mit Wasserfilter	842902327	Bohnenbehälterdeckel dunkelblau	
10	842502312	Wassertank lgt. mit Filterelement und Wasserfilter	33	842900468	Eintrittskopf Kaffeebohnen
10	14024392	O-Ring ODM 080-30, Silikon	31	147719056	Eintrittskopf Dosiermenge
11	126764718	Druckfeder zu Wassertankventil	32	842900600	Linien-Blechschr. 3,5x12 DIN 7981, vernick.
12	147905952	Stoßel Wassertankventil_grau	33	842901781	Dichtung zu Bohnenbehälter
13	842501633	Gehäuse m. Magnet schwarzmetall	34	140001952	Zahnrad schwarz Dosiermenge
	222420343	Gehäuse m. Magnet dunkelblau	35	140000950	Zahnrad Milchfenheit
14	842501634	Satzschubstange, silbermetall	36	842901842	Abtropfgitter, schwarzmetall
14	842502208	Satzschubstange, dunkelblau	37	842900802	Abtropfschale schwarzmetall
15	842500491	Magnet stromlos Fronttür	842900208	Abtropfschale chrom Telex	
16	842500492	Verschlußbügel Fronttür	38	842900202	Montagegewindestift (Nichtmet.) grau
17	842500031	Geräufuß Ø19/10mm xØ115mm, schwarz	38	842900190	Reinigungsgerät
18	842501838	Fronttür silbermetall, hoch Saeco	40	160509800	Bedienungseinheit V81 Schwarz
	222621838	Fronttür grau, hoch Vienna exclusive	41	842902292	Bedienungseinheit Vienna Version V2 03
19	842501638	Eintrittsbüchse für Drehbohrer	43	842900600	Montagewinkel zu Steuerungskarte CPU

Having said that, MOTU have made it easy to connect a hardware reverb unit for monitoring by adding an effects loop controlled by an aux send. Cuemix is also useful for monitoring MIDI hardware instruments directly rather than via aux channels set up in your sequencer, though of course you don't get zero latency with software instruments as their sound is generated inside the computer. As supplied, the 828 MkII comes with multichannel ASIO drivers for Mac and PC as well as a Mac OS X Core Audio driver. MOTU claim that the MIDI timing is as accurate as the host software allows. Each input has its own Trim control for level setting and a miniature toggle switch to turn on phantom power for use with capacitor mics or active DI boxes. Also on the front panel is the headphone jack, which by default shares the same level control as the main stereo outs. This is not always what you want, but you can also assign the headphone out its own signal source and level control if you need to. A DSP-powered phaselocking system is used in combination with filtering to achieve fast lock times and subframe timing accuracy. One of the included pieces of software is called MOTU SMPTE Console, and provides the means to control the SMPTE functionality of the unit when, for example, sending SMPTE to stripe tapes. SMPTE sync works with any host applications, Mac or PC, that support the ASIO 2 sample-accurate sync protocol. In theory, under Mac OS X, users can slave the MOTU driver to another Core Audio driver — either MOTU or thirdparty, which includes the Mac's builtin audio — for accurate sync. However, certain audio programs, including the current versions of Logic and Cubase, don't as yet allow users to select multiple audio interfaces under Mac OS X, a situation that both Emagic and Steinberg need to sort out without further delay. The Cuemix software is, in effect, a control panel for the 828 MkII's onboard DSP, which runs your mixer setups without imposing any load on the host CPU. <http://sirintheppgroup.com/userfiles/emerson-ewl20s5b-manual.xml>



Model A412B Microphone Base User Guide



SPECIFICATIONS

Dimensions

See Figure 2

Weight

0.68 kg (1.5 lbs) net

0.91 kg (2.0 lbs) packaged

REPLACEMENT PARTS AND ACCESSORIES

Cable (10 ft) C121

Base Plate Bumpers 80A8053A

GENERAL

The Shure A412B microphone base allows gooseneck microphones to be quickly mounted in situations where permanent installation is impractical. The angled XLR input connector maintains a low profile, while inside the base there is ample room for custom circuitry.

INSTALLATION

Attaching a Microphone to the Base

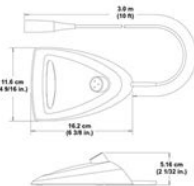
Insert the XLR connector on the microphone into the female XLR connector on the top of the microphone base.

Securing the Microphone Base to a Surface (Optional)

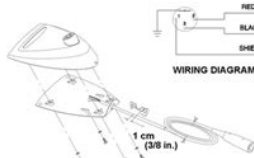
1. Install two No. 6 wood screws, two inches apart, on the mounting surface (see Figure 1, diagram A).
2. Place the key holes over the screw heads and push the microphone into position. Adjust the height of the screws as necessary to secure the microphone (see Figure 1, diagram B).



SECURING THE A412B TO A MOUNTING SURFACE
FIGURE 1



DIMENSIONS
FIGURE 2



REMOVING THE BACK PLATE
FIGURE 3

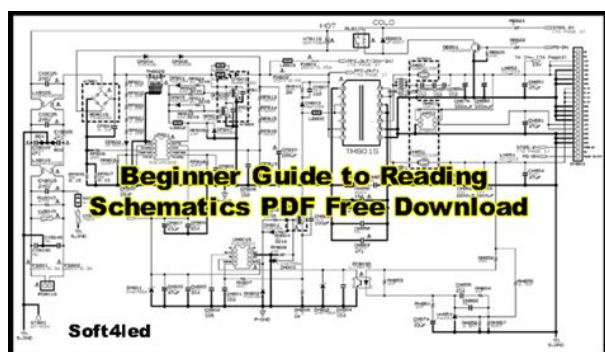
©2005 Shure Incorporated
2702977 (Rev. 4)



If you're hooked up to a computer and you try to use the front panel to change something that you should be adjusting via a software control panel, the twoline, 16character backlit LCD window prompts you. As a standalone mixer, the 828 MkII can sum all the inputs to a stereo pair and up to four simultaneous mixes can be run, each feeding a different output pair. This could be useful in setting up a couple of alternative monitor cue mixes, for example. Computerfree use is made possible by the six rotary encoders on the front panel where their values, levels or parameter names are shown in the display window. All six DSP section encoders and the level knob have integral push switches for confirming operations or toggling between modes. Using the DSP section, up to 16 mix presets can be stored and recalled. Back in mixer mode, the LCD shows the settings for the current mix, where the two lines of characters become two lines of tiny faders. When something is adjusted, the display temporarily zooms in on this parameter while it is being adjusted and the time the display takes to revert to normal after adjustment can also be changed by the user. The Cursor knob scrolls through the 20 possible inputs while the Value knob adjusts their settings. At its simplest, this would allow you to rehearse via the 828 MkII in your studio without needing to boot up the computer. The ability to run four separate mixes simultaneously adds to the 828 MkII's flexibility. Mixes may be named and the settings include levels, pan positions, mute and solo settings. Mix 1 can be routed directly back into a computer input, which makes it easy to mix back to a spare stereo track of the software. This is a useful option where you may be using external MIDI synths that need to be added back into the final mix. The current OS X driver is v1.09 which also works with the old 828, and this is also happy with dualprocessor G5 machines.

It's also handy being able to plug a guitar directly into the interface, especially if you have a software modelling amp plugin to process it with. The instrument inputs work well and are creditably quiet in use. I always liked the sound of the original 828 and the MkII's converters sound, if anything, fractionally better still, so there are no complaints in that department. Obviously you can get better results using audiophile converters that cost around the same as a family hatchback car, but these are pretty good. Also in the display section is an indication of the current clock rate, the digital lock status of the interface and SMPTE activity. And of course the old 828 didn't support high sample rates. It can take care of latencyfree direct monitoring, and as it mixes using the DSP chips inside the 828 MkII, it doesn't tax the host software. Although modern computers are now so fast that

latency is seldom an issue, its still nice to be able to set up zerolatency monitoring for the benefit of those performers who are very sensitive to even a few milliseconds of delay, and the ability to mix without a computer is great if you just need to plug in a mic and a guitar for rehearsals. Setting up a mix using small assignable controls isnt as quick as on a conventional mixer, but its pretty straightforward. It is based on the audio recording and editing side of MOTUs flagship Digital Performer package, so its not a toy by any means. The frontpanel mic amp inputs, improved metering and high samplerate support are all welcome, and while not everyone will need the DSP mixing facilities, it certainly doesnt hurt to have them. As a satisfied 828 user myself, Im now looking for an excuse to upgrade! Although the Audiodesk recording software is only available for Mac, all the other key features outlined in the main review text still apply within a PC context. I was able to test the 828 MkII with both desktop 2.6GHz Pentium 4 with 1MB RAM and laptop 2.



<http://www.bouwdata.net/evenement/bose-ls-28-manual>

0GHz Pentium 4 with 512MB RAM systems, both of which were running Windows XP. Driver installation, which has to be done prior to connecting the MOTU to the PC, proceeded without a hitch. The review unit was supplied with version 3.1 of the drivers but a newer version 3.3 was available from the MOTU web site as a 2.6MB download, and I used the latter in testing on both systems. Using the laptop, the only very trivial! problem I encountered was the need for a sixpin to fourpin Firewire cable, as many laptops feature the more compact fourpin Firewire connectors. MOTU do supply a healthily long 10 foot sixpin to sixpin cable, and this worked fine with the Firewire PCI card in my desktop PC. The performance of the 828 MkII was excellent when tested with both Reason v2.5 and Wavelab v4.01b. The system felt very responsive and there were no glitch issues even at a very comfortable 128 samplesperbuffer setting. Realtime performance of soft synths within Reason via the MOTU MIDI In was perfectly acceptable. I could easily imagine combining the 828 MkII with a Firewireequipped PC laptop to form the core of a very respectable mobile recording setup. With the desktop PC I was able to test using Cubase SX v2.0.1.10, Sound Forge 7, Wavelab v4.01b, Acid Pro v4.0d and Reason v2.5. In using all these applications, I only experienced one minor problem. At the 128sample buffer setting, playback within Wavelab produced some minor glitching using the ASIO drivers. This disappeared at higher buffer settings and was also not an issue when using the MMEWDM drivers. As Wavelab had functioned fine on the laptop system, Im inclined to think this might have been something specific to the hardware or OS setup on the desktop PC, rather than an issue with the 828 MkII or its drivers. In all other respects, the MOTU system performed flawlessly. Indeed, once hooked up, use within SX was totally transparent. All the various inputs and outputs were available via the SX VST Connections dialogue.

<http://hydroconseil.com/images/canon-eos-300d-manuale-italiano.pdf>

INSTALLATION

1. Assemble fuel rail and fuel injectors. See 9.9 FUEL RAIL/ FUEL INJECTORS.
2. Connect engine harness at connector [145].
3. Connect engine coolant temperature sensor connector [90] and oil pressure sending unit connector [120].
4. See Figure 3-14. Connect connector [84], front injector and connector [85], rear injector on fuel rail.
5. Supporting fuel rail oriented with fuel tubes toward the left rear, push rear injector into bore in intake runner.
6. Swing fuel rail over and push front injector into intake runner in front cylinder.
7. Rotate rubber boots under fuel rail and install rubber boots over intake runners.
8. Install fasteners through fuel rail into rubber boots. Tighten to 9.7 Nm (85 in-lbs).
9. See Figure 3-16. Orient intake clamps as shown.
10. Press throttle body and cables into rubber boots.
11. See Figure 3-17. Tighten intake hose clamps (7) to 1.25 Nm (11 in-lbs).
12. See 1.19 SPARK PLUG/COIL. Install spark plugs and coils. Tighten to:
 - a. Tighten spark plugs to 23 Nm (17 ft-lbs).
 - b. Tighten coil fasteners to 9.7 Nm (85 in-lbs).
13. Attach the idle speed control (IAC) connector.
14. Attach the throttle position (TP) sensor.
15. Install right angle connectors on rigid fuel lines from fuel rail. Push until audible "click" is heard.

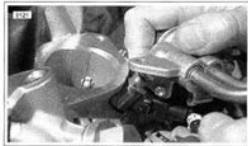


Figure 3-15. Front Injector

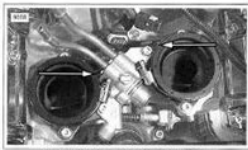


Figure 3-16. Throttle Body Intake Clamps

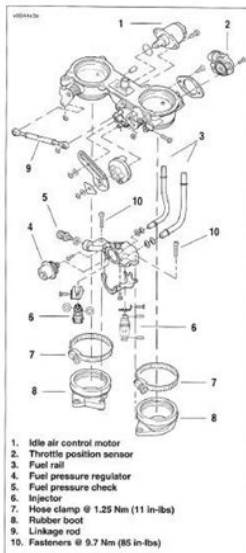


Figure 3-17. Throttle Body and Fuel Rail

www.epcatalogs.com

Configuring the various analogue outputs to feed a surround sound monitoring system within either SX or Acid also worked without a problem. Playback of commercial recordings, from jazz through to nu metal, demonstrated that the quality of the analogue output hardware is very good. Recording both vocals and acoustic guitar with a midpriced condenser mic via the frontpanel XLR inputs also produced very pleasing results — crisp and clear highs and solid lows. I can only agree with Paul Whites comments in the main review that the MOTU 828 MkII offers some significant improvements over the original 828. While one would expect that the audio quality has moved forward in the three years that separate it from the original, perhaps more significant is the improved functionality — and in particular the additional controls available via the front panel. These really do make the unit much more flexible. While the Audiodesk software is not available to PC users, the useful Cuemix application is, and functions in the same fashion as on the Mac. Although I did not have the opportunity to test the GSIF drivers, the WDM and ASIO drivers seem very solid indeed, making the 828 MkII suitable for use with all the current crop of major PC audio applications. Essentially, whatever you want to do, the MOTU does its best not to get in the way, whether youre working on PC or Mac. As Paul commented about the original 828 back in his July 2001 review, this is a does exactly what it says on the tin type of product. If the combination of analogue and digital connectivity fits your particular needs, Id have no hesitation in recommending the 828 MkII, and if I could justify upgrading my own rackbased audio interface at present, the MOTU would most certainly be on my shortlist. John Walden Pros Costeffective. Good sound quality. Can be used as a standalone mixer. Good bundled audio software.Retro Jungle Production With Pete Cannon 1 month 1 week ago.

<http://i-facet.com/images/canon-eos-300d-service-manual.pdf>



Everything You Wanted To Know About Studio Headphones. 2 months 1 week ago. Older Allen and Heath desks ML vs GL series Live Sound in the Time of COVID not Marshalls The AllNew Behringer Keyboards n Stuff Thread Kora build from scratch, BBC2 DeviantArt for Audio Patch bay wiring The contents of this article are subject to worldwide copyright protection and reproduction in whole or part, whether mechanical or electronic, is expressly forbidden without the prior written consent of the Publishers. Great care has been taken to ensure accuracy in the preparation of this article but neither Sound On Sound Limited nor the publishers can be held responsible for its contents. The views expressed are those of the contributors and not necessarily those of the publishers. Learn more Does anyone have a pdf copy. Would be greatly appreciated. The MOTU site only has the mk3 manual available for purchase. It doesn't even list it for sale on their site. WTF Does anyone have the file, PLEASE Memorials, RIPs and Obituaries Grove Park, Maidenhead, Berkshire SL6 3LW. Hosted by Nimbus Hosting. Create one here. Le pilote audio MOTU GSIF permet d'utiliser la 828mkII comme interface audio pour le logiciel. Trouvez mode d'emploi GRATUIT pour Carte son MOTU 828x manuel d'utilisation, forum et support. Can be used with various MOTU 828 Mk III Hybrid Je passe d'une Motu 828 mk2 à la 828 mk3 hybrid.. PDF. Téléchargements. Manual Windows. Tout afficher. Manual Windows. Yes and no the MOTU preamps are notoriously lamented for those reasons, but same can be. MOTU 828mk2 laurend. Dotée de 18 entrées et 22 sorties avec un DSP pour le d. si la MOTU 828mkII ne fonctionne comme décrit dans ce manuel.. frequency energy and, if not installed and used in accordance with the instruction manual,,,,, Creators are allowed to post content they produce to the platform, so long as they comply with our policies. United Kingdom. Company number 10637289. MOTU 828MKII USER MANUAL Pdf Download.

; In this Figure 322 In Mac OS 9, all MOTU FireWire audio interfaces get their case, the distribution box is the master, and all clock from a single master sync source on any connected 828mkII or FireWire interfaces slave directly to it instead of to other MOTU FireWire interface. MOTU 828MK3 USER MANUAL Pdf Download.; Connecting other MOTU FireWire interfaces FireWire Console and choose any clock source you You can add an original MOTU 828 to the end of a wish except any of the slave interfaces, of course. FireWire daisy chain because the 828 has only one. MOTU.com 828mkII UltraFast USB manual; MOTU is an engineering-driven music technology company passionately driven to create products that help you produce amazing music. MOTU's award-winning hardware and software are used by top professionals every day on hit songs, mega tours, primetime shows and blockbuster films. 828 MK2 MOTU 828 Mk2 Audiofanzine; The MOTU 828 MK2 is a 14 x 10 audio and MIDI interface designed for the home studio DAW that will support up to 96 kHz. For such a little unit, it's actually got a good amount of versatility and options. MOTU.com Product manuals; MOTU is an engineering-driven music technology company passionately driven to create products that help you produce amazing music. It used to work great and I used it with 3 computers PC and Mac. Click here Incredibly expansive in its level of control and versatility, the 828mkII delivers DSP-driven mixing and monitoring in any situation. At the studio, clubs, or rehearsal, you can connect anything you want and monitor it with no separate mixer needed. The superb front.

Click To Read More About This Product Please call or chat to check your local store inventory for this item. Incredibly expansive in its level of control and versatility, the 828mkII delivers DSPdriven mixing and monitoring in any situation. At the studio, clubs, or rehearsal, you can connect anything you want and monitor it with no separate mixer needed.

<http://stroynerud-sm.ru/wp-content/plugins/formcraft/file-upload/server/content/files/16274d4f19d5fc--brother-hl6050dn-manual.pdf>

The superb frontpanel control array and backlit LCD allow you to directly access the entire mix or individual settings. There's no channel sharing, either. Even if chocolate chip is on your mind, our cookies make an important contribution to a great shopping experience. They help us to show you relevant offers, remember your settings to ease navigation on our website and alert us when the website is slow or unstable. You can view and manage further details and options here. Always with customised added value for musicians. Close Service Contact us Help Samplerate in kHz 192 kHz Max. Resolution in bit 24 bit BusPowered No Incl. Of these, 36 customers have written no texts or given their feedback in another language. 4 27 Customers 27 customers have given this product a 4star rating. Of these, 25 customers have written no texts or given their feedback in another language. 3 4 Customers 4 customers have given this product a 3star rating. Of these, 3 customers have written no texts or given their feedback in another language. 2 2 Customers 2 customers have given this product a 2star rating. No customer has written a text about this; or they have written a text in a different language. 1 2 Customers 2 customers have given this product a onestar rating. No option to record raw is frankly pathetic. Live the interface is impossible to control without a nervous breakdown as you can't open different parameters all in one screen. Why no option to open channel sections for eq, dynamics, sends. No midi mapping of parameters either. Frankly I expect more for my investment, or at least a software update every few years. I have tried many other interfaces some being a lot more expensive. However, this one has been by far the best I have owned. A good number of inputs and outputs too. I use it with a pair of Alesis active speakers which I also purchased from you. I also use Sonar X2 Producer running on Windows 7 64bit and there have been no driver issues whatsoever.

cnccat.com/products_img/files/canon-es-600-manual.pdf

How refreshing is that. I would highly recommend this interface. Send report Total handling quality features sound My experience. Kadub, 22.09.2018 The 828mk3 is a nice interface when it works but the windows drivers are buggy. Now I have to send it back for repair a 2nd time because it won't power up again. It just died for a second time in the 3 years since I bought it. To be fair, when it works, it works well and sounds good but I am lucky if I get a straight hour without having to reboot it. Send report Total handling quality features sound Nice performance for the money 28.12.2014 I bought this unit to get a good amount of base inputs. Low latency and the ability to connect with both usb or firewire is very handy too most stable with usb. I later added inputs by connecting other devices to it which is also very easy to do. The quality of the inputs are descent and is enough for the most common recording situations and instruments. Send report Read all 33 reviews Rate product Samplerate in kHz 192 kHz Max. Resolution in bit 24 bit BusPowered No USB BusPowered No Incl. Samplerate 192 kHz Max. Resolution in Bit 24 bit USB BusPowered No BusPowered No Incl. Power Supply Yes USB Version 2.0 Windows Thunderbolt driver No Thunderbolt Version 2 Width in mm 483 mm Depth in mm 178 mm Height in mm 44 mm Included in delivery USB cable, firewire cable, software Zero latency monitoring Yes VAT Available immediately Available immediately This item is in stock and can be dispatched immediately. Standard Delivery Times Recording EGuitars Our aim is to explain the basic process of recording the electric guitar! Online Guides Show all Recording EGuitars Our aim is to explain the basic process of recording the electric guitar. Online Guides Show all Home Recording Home Recording can be very complicated. We're here to offer some advice.

Online Guides Show all Computer Based Studios This article will look at how to integrate a computer into different studio environments, and will highlight the issues of functionality and connectivity. This may happen as a result of the following Javascript is disabled or blocked by an extension ad blockers for example Your browser does not support cookies Please make sure that Javascript and cookies are enabled on your browser and that you are not blocking them from loading. It only takes a minute to sign up. It appears that the 828 Mk2 manual was available previously in hardcopy, but never in PDF format. I contacted MOTU, and they suggested I use the mk3 manual. Unfortunately, the front panel is different on the Mk2, so the Mk3 manual doesn't help. No luck on my unit. Later, I opened my MOTU up, blew some canned air into it, and reassembled it. Now my MOTU front panel controls work properly it was the param knob. Please be sure to answer the question. Provide details and share your research. Making statements based on opinion; back them up with references or personal experience. To learn more, see our tips on writing great answers. Browse other questions tagged motu or ask your own question. The photos I have taken make the scratches worse than they really are, but thought I better take some just so you can see for yourself. The interface was used in a home studio set up. Comes boxed in excellent condition with only the Audio Desk manual. This superb device can form the heart of your digital recording and sequencing setup. Connects to PC and Mac systems via Firewire and integrates with software such as Logic Pro and Cubase. Superb build and sound quality. Plus this unit also operates as a standalone 1U rack digital mixer with all functions accessible via the cue mix controls on the front panel. This makes it especially versatile compared with competitor products. Selling because a change of setup makes the unit no longer necessary.

An extremely reliable bit of kit sounds great and has never let me down. MOTU says The 828mkII contains everything you need to turn your Mac or PC Expand your system by connecting additional interfaces. The 828mkII is equally well suited for studio and stage, with or without a computer. As a computer interface, the 828mkII provides 20 separate inputs and 22 outputs, including separate main outs and headphone out. If you have any questions please ask and I will only ship within the UK, sorry. I emailed MOTU last week with some. Now when I turn it on while it's connected, it doesn't boot up. Impossible to configure MIDI register your product by MOTU. I have to mention I use it with MacPro Boot Camp Under.

<https://www.interactivelearnings.com/forum/selenium-using-c/topic/15933/bose-ls-28-manual>